

PORTFOLIO OVERVIEW

HUMAN SERVICES PORTFOLIO OVERVIEW

MINISTER AND PORTFOLIO RESPONSIBILITIES

The Department of Human Services was created on 26 October 2004, as part of the Finance Portfolio, to improve the development and delivery of Government social and health related services to the Australian people.

As a result of the Administrative Arrangements Orders (AAOs) issued on 30 January 2007, the Department of Human Services and its agencies were transferred to a newly created Human Services Portfolio.

The Department of Human Services provides a central policy and coordination role for the delivery of services across the Portfolio as well as being the delivery agency for child support and vocational rehabilitation services. The AAOs of 25 January 2008 clarified the Department's responsibility for the development of policy or service delivery, directed at ensuring the effective, innovative, and efficient delivery of Government services. The Department works with other departments and agencies to ensure early consideration of service delivery issues in the policy development process to improve the quality and cost effectiveness of service delivery by agencies in the Human Services Portfolio.

HUMAN SERVICES AGENCIES

AGENCIES WITHIN HUMAN SERVICES PORTFOLIO

The Human Services Portfolio comprises the following General Government Sector entities and Non-General Government Sector Entities:

General Government Sector Entities

- The **Department of Human Services** consists of the Central Department, the Child Support Program and CRS Australia. The Central Department's role is to direct, coordinate and broker improvements to service delivery, provide policy advice on service delivery matters to government and ensure efficient implementation of Government service delivery. The Child Support Program provides support to separated parents to provide the financial and emotional support necessary for their childrens' wellbeing. CRS Australia assists people with an injury or a disability to get a job or return to work by providing individualised vocational rehabilitation, and helping employers to keep their workplaces safe.

Portfolio overview

- **Centrelink** delivers a range of government payments and services for retirees, the unemployed, families, carers, parents, people with disabilities, indigenous people, and people from diverse cultural and linguistic backgrounds, and provides services at times of major change.
- **Medicare Australia** looks after the health of Australians through efficient services and payments such as Medicare, the Pharmaceutical Benefits Scheme, the Australian Childhood Immunisation Register and the Australian Organ Donor Register.

Non-General Government Sector Entities (Public Non-Financial Corporations)

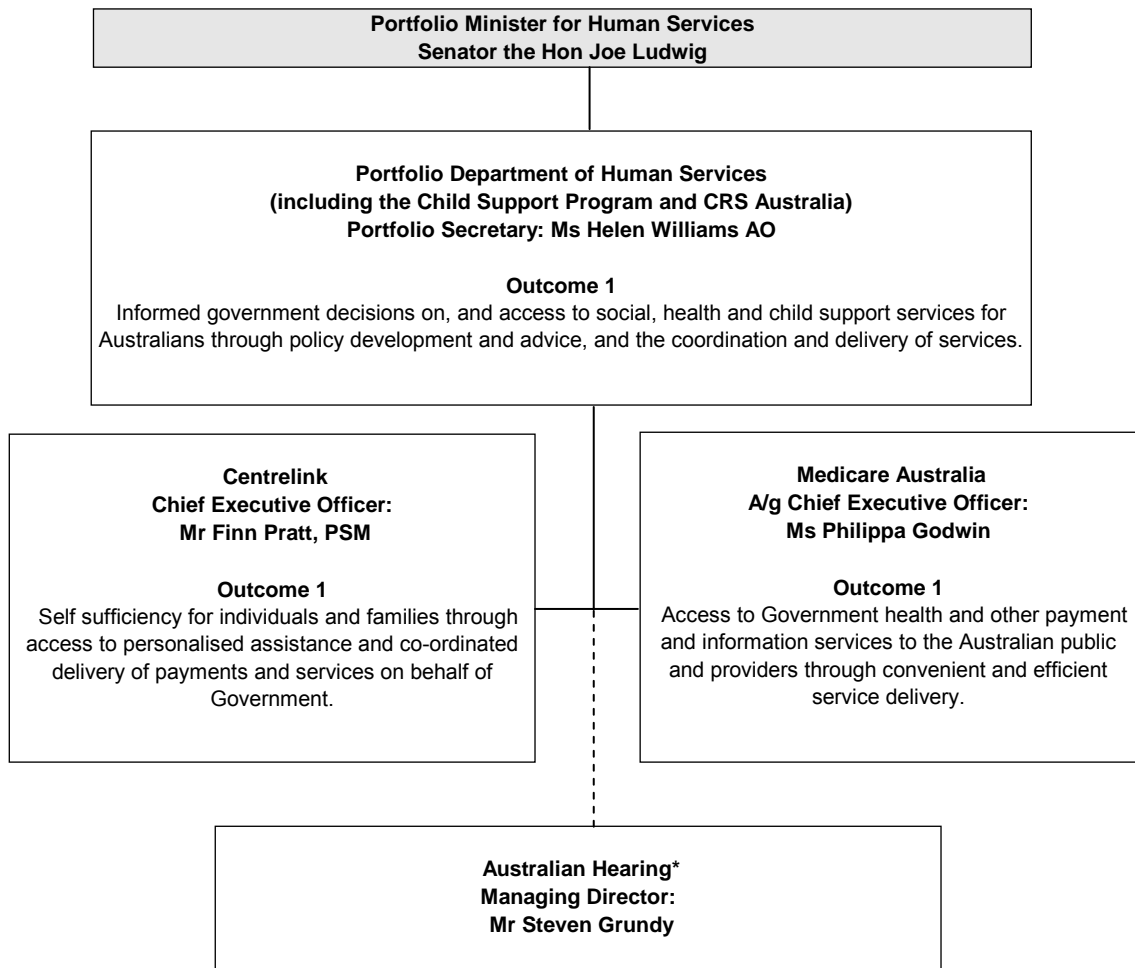
- **Australian Hearing** is one of the largest hearing service providers in the world and is dedicated to helping people manage their hearing impairment so they have a better quality of life. Australian Hearing provides a full range of hearing services for children and young people up to the age of 21, eligible adults and aged pensioners, and most war veterans.

As required under Section 12 of the *Charter of Budget Honesty Act 1998*, non-general government sector entities are not consolidated into the Commonwealth general government sector fiscal estimates. These entities are not reported in the Portfolio Budget Statements.

More comprehensive information on activities undertaken within the Department of Human Services and other Human Services Portfolio agencies is available on the following web site.

<http://www.humanservices.gov.au>

Figure 1: Human Services portfolio structure and outcomes



* This agency is non-general government sector entity and is not consolidated into the Commonwealth general government sector fiscal estimates. Therefore it is not reported in the Portfolio Budget Statements or Portfolio Additional Estimates Statements.

PORTFOLIO RESOURCES

Table 1 shows the total resources provided to the portfolio in the 2009-10 budget year, by agency.

Table 1: Portfolio resources 2009-10

	Appropriation			Receipts	Total
	Bill No. 1 \$m	Bill No. 2 \$m	Special \$m	\$m	\$m
Department of Human Services					
Administered appropriations	7	-	85	1,207	1,299
Departmental appropriations	558	8	-	204	770
Total:	566	8	85	1,411	2,069
Centrelink					
Administered appropriations	-	-	-	-	-
Departmental appropriations	2,861	10	-	172	3,044
Total:	2,861	10	-	172	3,044
Medicare Australia					
Administered appropriations	4	-	-	239	244
Departmental appropriations	650	39	-	82	771
Total:	654	39	-	321	1,015
Portfolio total					6,128
Less amounts transferred within Portfolio					-
					Resources available within Portfolio: 6,128

Discrepancies in the table between totals and sums of components are due to rounding.